

# **HUSKY** **WeatherBEATER™** **Custom Vehicle Floor Protection**

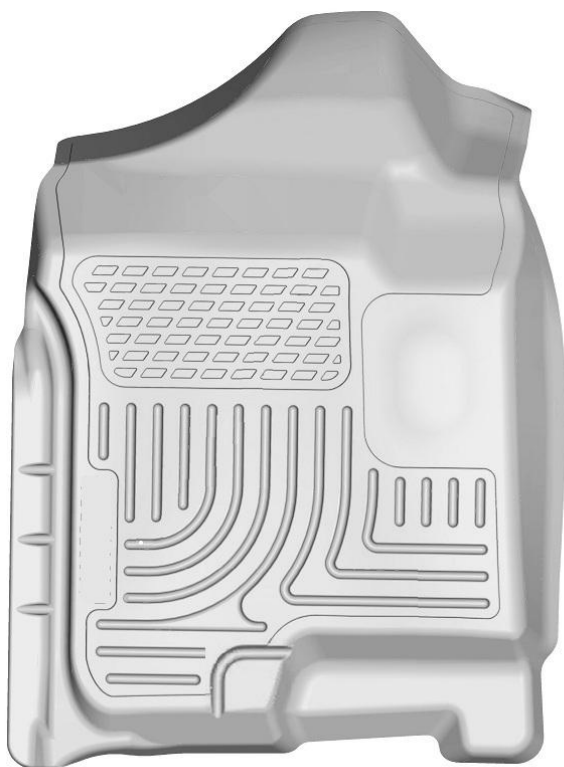
## CARE AND USE INSTRUCTIONS

---

Thank you for selecting a WeatherBeater™ Floor Liner from Winfield Consumer Products. Your new front floor liners are custom molded to fit your vehicle. The liners are made to take the place of your factory floor mats. ***For correct fit, it is necessary to remove the factory floor mats before installing your new floor liners.*** However, do not remove the factory-installed carpeting.

Your liners are made from an engineering resin that is lightweight and extremely tough and durable. The easiest way to clean your liners is with a damp cloth or sponge. If using a cleaner, 409® or Glass Plus® work well. Use of Armor All®, Son-of-a-Gun® or similar items is discouraged as these products make the liners slick.

## INSTALLATION INSTRUCTIONS FOR YOUR CADILLAC ESCALADE / CHEVROLET TAHOE / GMC YUKON & YUKON DENALI WeatherBeater™ FRONT FLOOR LINERS



LEFT OR DRIVER'S SIDE



RIGHT OR PASSENGER'S SIDE

EASE INSTALLATION OF YOUR FRONT FLOOR LINERS, FIRST MOVE THE FRONT ROW SEATS TO THEIR MOST REARWARD POSITION. WITH THIS DONE, INSTALL THE LINERS ORIENTED AS SHOWN ABOVE AND THEN REPOSITION SEATS AS DESIRED.

# **HUSKY** **WeatherBEATER™** **Custom Vehicle Floor Protection**

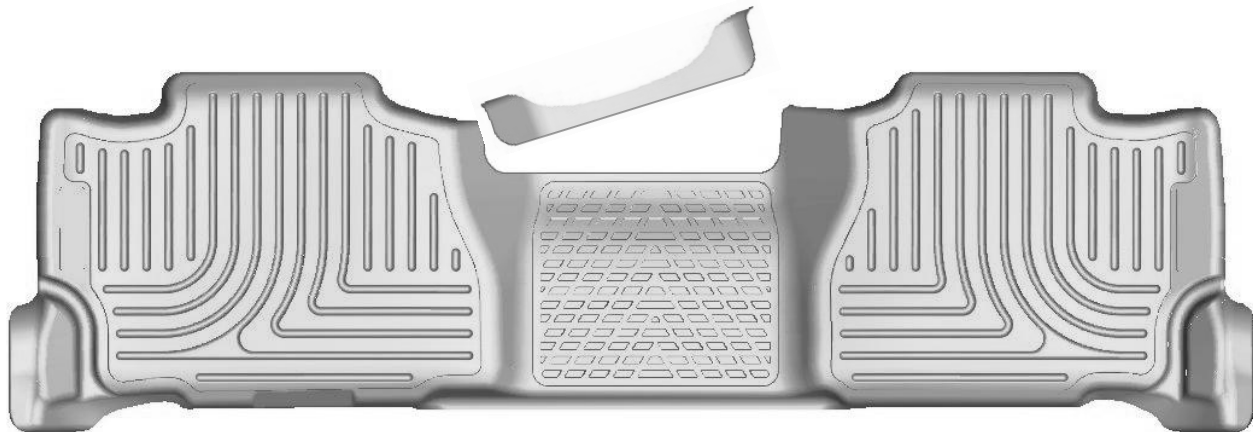
## CARE AND USE INSTRUCTIONS

Thank you for selecting a WeatherBeater™ Floor Liner from Winfield Consumer Products. Your new rear floor liner is custom molded to fit your vehicle. The liner is made to take the place of your factory floor mats. **For correct fit, it is necessary to remove the factory floor mats before installing your new floor liners.** However, do not remove the factory-installed carpeting.

Your liner is made from an engineering resin that is lightweight and extremely tough and durable. The easiest way to clean your liner is with a damp cloth or sponge. If using a cleaner, 409® or Glass Plus® work well. Use of Armor All®, Son-of-a-Gun® or similar items is discouraged as these products make the liner slick.

## INSTALLATION INSTRUCTIONS FOR YOUR CADILLAC ESCALADE / CHEVROLET TAHOE / GMC YUKON & YUKON DENALI WeatherBeater™ REAR SEAT FLOOR LINER

FRONT OF VEHICLE

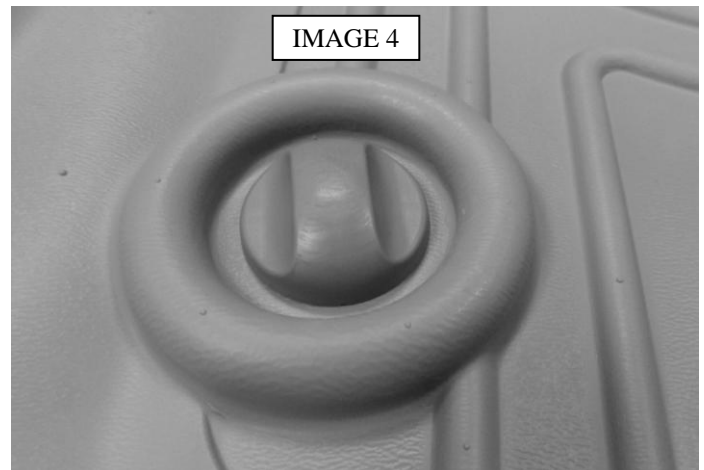
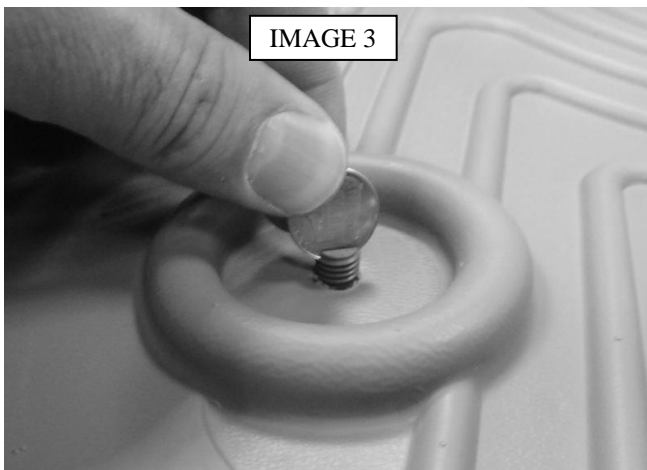
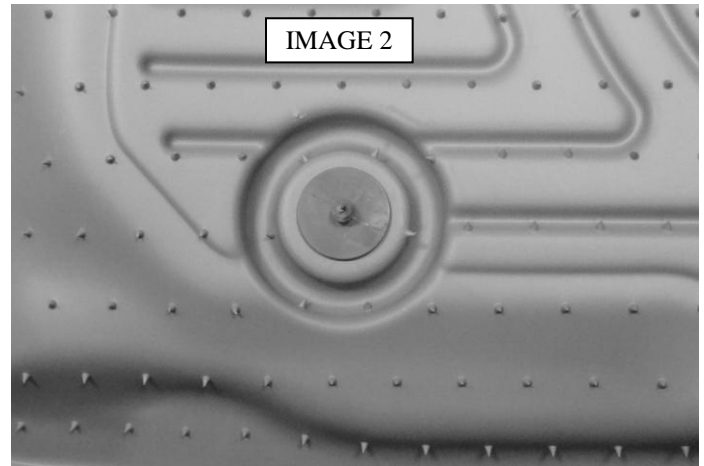
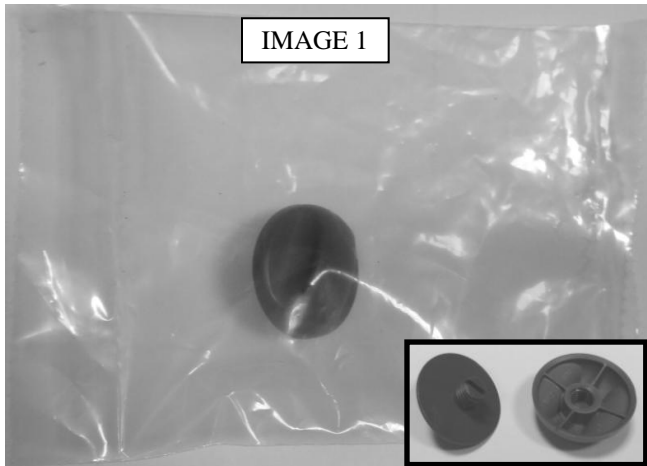


TO EASE INSTALLATION OF YOUR SECOND SEAT LINER, FIRST MOVE THE FRONT SEATS TO THEIR MOST FORWARD POSITION. WITH THIS DONE, INSTALL THE LINER IN YOUR VEHICLE AS SHOWN IN THE IMAGE ABOVE. ONCE THE LINER IS INSTALLED, REPOSITION THE FRONT SEATS AS DESIRED.

NOTE THAT IF YOU HAVE A CADILLAC ESCALADE YOU WILL NEED TO TRIM YOUR LINER AS SHOWN ABOVE. TO TRIM, SIMPLY FOLLOW THE MOLDED IN TRIM GUIDE AND REMOVE THE PORTION OF THE LINER ON THE FRONT EDGE OF THE TRANSMISSION TUNNEL AS SHOWN ABOVE. TAHOE AND YUKON OWNERS WITH FRONT ROW BENCH SEATS THAT INCLUDE A REAR SEAT CUP HOLDER WILL ALSO NEED TO TRIM THEIR LINER AS SHOWN.

PLEASE FIND IN YOUR PACKAGING A COMPONENT BAG THAT INCLUDES A FASTENER DESIGNED TO AID IN SECURING YOUR DRIVER'S SIDE LINER IN POSITION. REMOVE THE FASTENER FROM THE BAG AND UNSCREW THE CAP FROM THE BASE (SEE IMAGE 1 BELOW). NEXT INSERT THE THREADED

PORION OF THE BASE INTO THE HOLE IN THE DRIVER'S SIDE LINER, INSERTING IT FROM THE BACK SIDE OF THE LINER (SEE IMAGE 2 BELOW). WITH THIS DONE INSTALL THE LINER IN THE VEHICLE AND, USING A COIN, SCREWDRIVER OR SIMILAR TOOL, SCREW THE BASE OF THE FASTENER INTO THE CARPETING (SEE IMAGE 3). LASTLY, AS SHOWN IN IMAGE 4, INSTALL THE CAP ONTO THE BASE. TIGHTEN UNTIL THE CAP MEETS RESISTANCE, DO NOT OVER TIGHTEN.



### HUSKY LINERS PRODUCT WARRANTY

Husky Liners guarantees to the original purchaser of Husky Liners products that they will not break or tear under normal usage during the life of the motor vehicle in/on which they are installed. This warranty shall only be effective while the original purchaser owns the motor vehicle and shall not apply to Husky Liners products that have been removed from the original vehicle on which they were installed. This warranty applies only to those parts that are correctly installed in/on the vehicle for which they were intended.

Husky Liners will warrant any part during the warranty period that proves defective in material and/or workmanship under normal installation, use, service, or maintenance. Return alleged defective part to the place of purchase for replacement or refund. Please have a copy of your purchase receipt available when you call. The foregoing is the only express warranty made by the manufacturer and is limited to the duration of this warranty. **ANY IMPLIED WARRANTY OF MERCHANTABILITY OR FITNESS FOR A PARTICULAR PURPOSE IS LIMITED IN DURATION TO THE DURATION OF THIS WARRANTY. LABOR CHARGES, INJURIES, OR ANY OTHER LOSS OR DAMAGES WHATSOEVER, INCLUDING THOSE INCURRED IN INSTALLATION ARE EXCLUDED. ADDITIONALLY, PAINTING OF REPLACEMENT HUSKY LINER PARTS AND ANY VEHICLE COMPONENT REPAIR OR REPLACEMENT AS WELL AS INCIDENTAL DAMAGES ARE EXCLUDED.**

This warranty is void for damages to the product due to misuse, abuse, neglect, accident, improper installation or any use that violates the instructions furnished by us.

**ABNORMAL WEAR AND TEAR ARE NOT COVERED UNDER THIS WARRANTY.** Obviously, if your dog chews up your Husky Liner product, it's not covered under the warranty. Likewise, if you shut your Husky Liner in the door of your vehicle, damage to the liner and/or door are not covered. Commonplace, everyday wear on a particular product is considered normal, and is not covered under warranty repair.

Winfield Consumer Products—800.344.8759—P.O. BOX 839—22425 D. Street—Winfield KS 67156