

# THANK YOU FOR SELECTING A HUSKY FLOOR LINER FROM WINFIELD CONSUMER PRODUCTS

## CARE AND USE INSTRUCTIONS

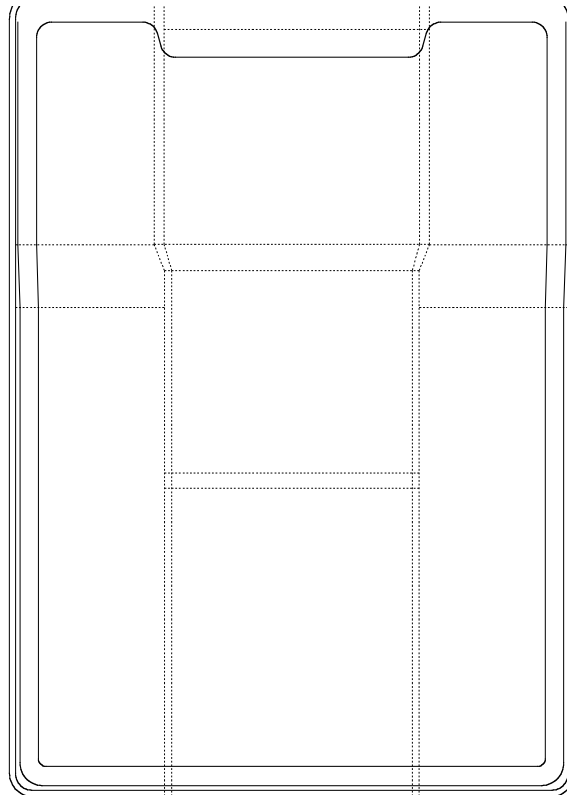
---

Your new floor liner is custom molded to fit your particular vehicle. The liner is made to take the place of your factory floor mats. For correct fit, it is necessary to remove the factory floor mat before installing your new floor liner. *However, do not remove the factory-installed carpeting.*

Your liner is made from an engineering resin that is lightweight and extremely tough and durable. The easiest way to clean your liner is with a damp cloth or sponge. If using a cleaner, 409® or Glass Plus® work well. Use of Armor All®, Son-of-a-Gun® or similar items is discouraged as these products make the liner slick.

## INSTALLATION INSTRUCTIONS FOR YOUR TAHOE YUKON/DENALI/ESCALADE THIRD SEAT ACCESS LINER

REAR OF VEHICLE (CARGO AREA)



PART #8141 IS DESIGNED FOR USE WITH ESCALADE/YUKON/DENALI AND TAHOE'S EQUIPPED WITH 2<sup>ND</sup> ROW BUCKET SEATING. THIS LINER PROTECTS THE THIRD SEAT ACCESS AREA (WALKWAY BETWEEN 2<sup>ND</sup> ROW BUCKETS) THAT IS NOT COVERED BY THE SECOND SEAT HUSKY LINER (PART #6141). IF YOUR VEHICLE IS EQUIPPED WITH A REAR BENCH SEAT, YOU DO NOT NEED THIS PART.

TO INSTALL LINER, FIRST FLIP BOTH 2<sup>ND</sup> ROW SEATS FORWARD. ONCE LINER IS INSTALLED, FLIP 2<sup>ND</sup> ROW SEATS DOWN, MAKING SURE THEY ARE SECURELY LOCKED INTO POSITION. A PHOTO OF THE INSTALLED PART IS ON THE BACK OF THIS PAGE.

